

ABOUT THE MAINE CLIMATE EDUCATION GRANTS

Grants for teacher climate education professional development in partnership with community-based organizations



ELIGIBILITY

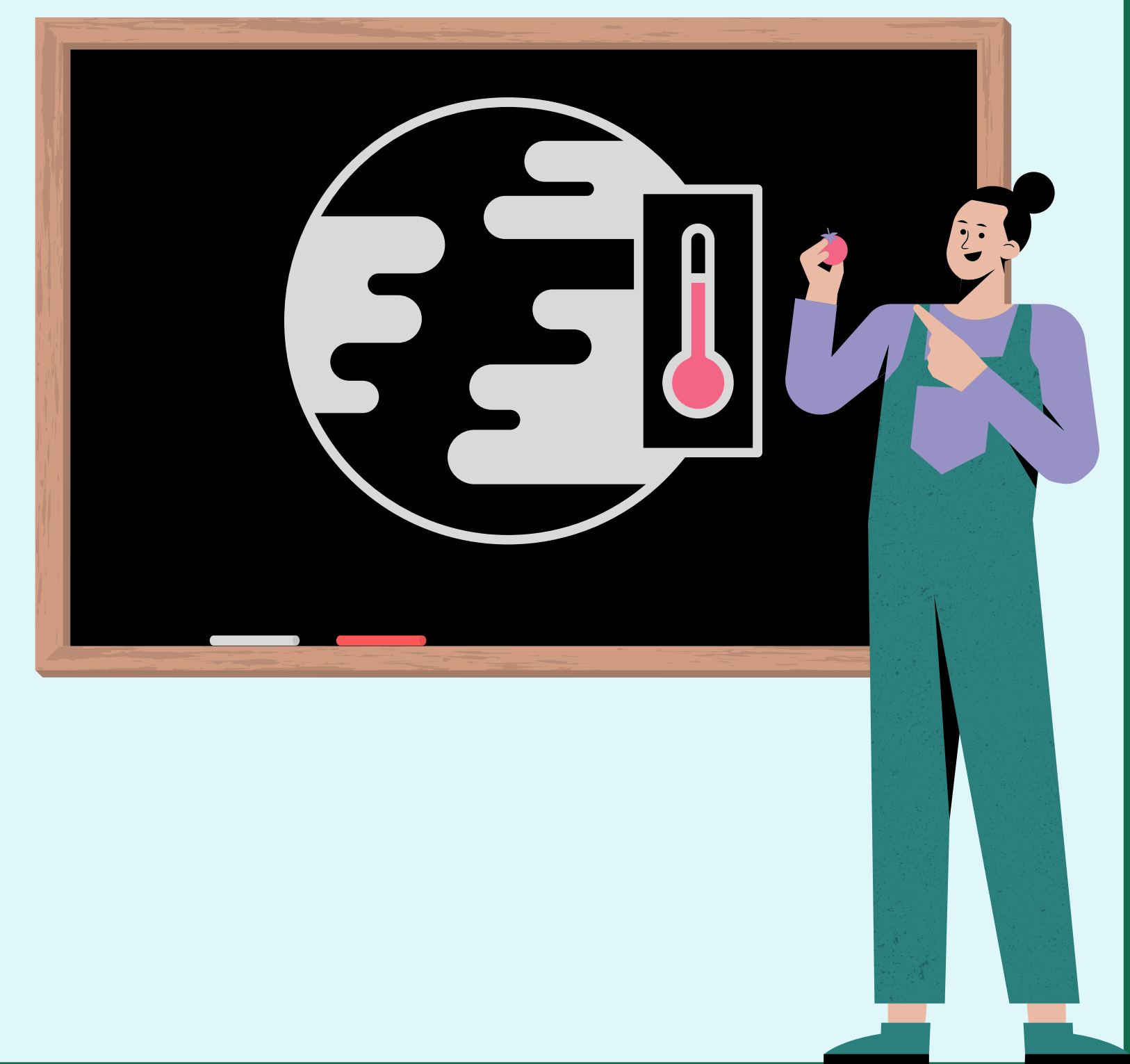
MAINE K-12 SCHOOLS

All local education providers throughout the state for Pre K-grade 12 are eligible for funds, including school administrative units, schools in an unorganized territory, private schools approved for the receipt of public funds, and CTE Region schools,

WHAT IS FUNDED

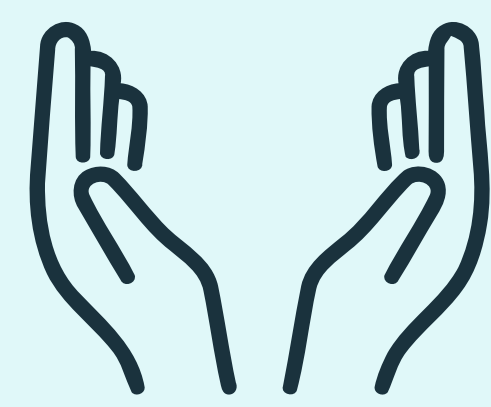
RANGE OF ACTIVITIES

Funding can be used for **hiring/contracting** program staff, providing **stipends** (standard DOE rules apply) to educators and community organizations, developing **curricula** and related supplies, costs of **physical space** for programming, and **administrative** expenses



PRIORITIZATION OF APPLICATIONS

UNDERSERVED COMMUNITIES



Communities that **have not been able to provide both:**

- Climate education (or environmental/outdoor) **partnerships** or **field opportunities** within the last 5 years **AND**
- Climate education (or environmental/outdoor) **electives, extra-curricular opportunities** or **classes**



PLACE-BASED WORK

Or interdisciplinary or project-based work

SOCIOECONOMICALLY DISADVANTAGED COMMUNITIES



Including tribal communities, migrant students, schools with high populations of students with free or reduced-price meals, or rural schools



PHASE 1 APPLICATION DEADLINE

NOVEMBER 3

Applications for phase 2 open in January



MORE QUESTIONS?

Read the full grant information online:
bit.ly/MaineClimateEducationGrant