

# ABOUT THE MAINE CLIMATE EDUCATION GRANTS

*Grants for teacher climate education professional development in partnership with community-based organizations*



## ELIGIBILITY

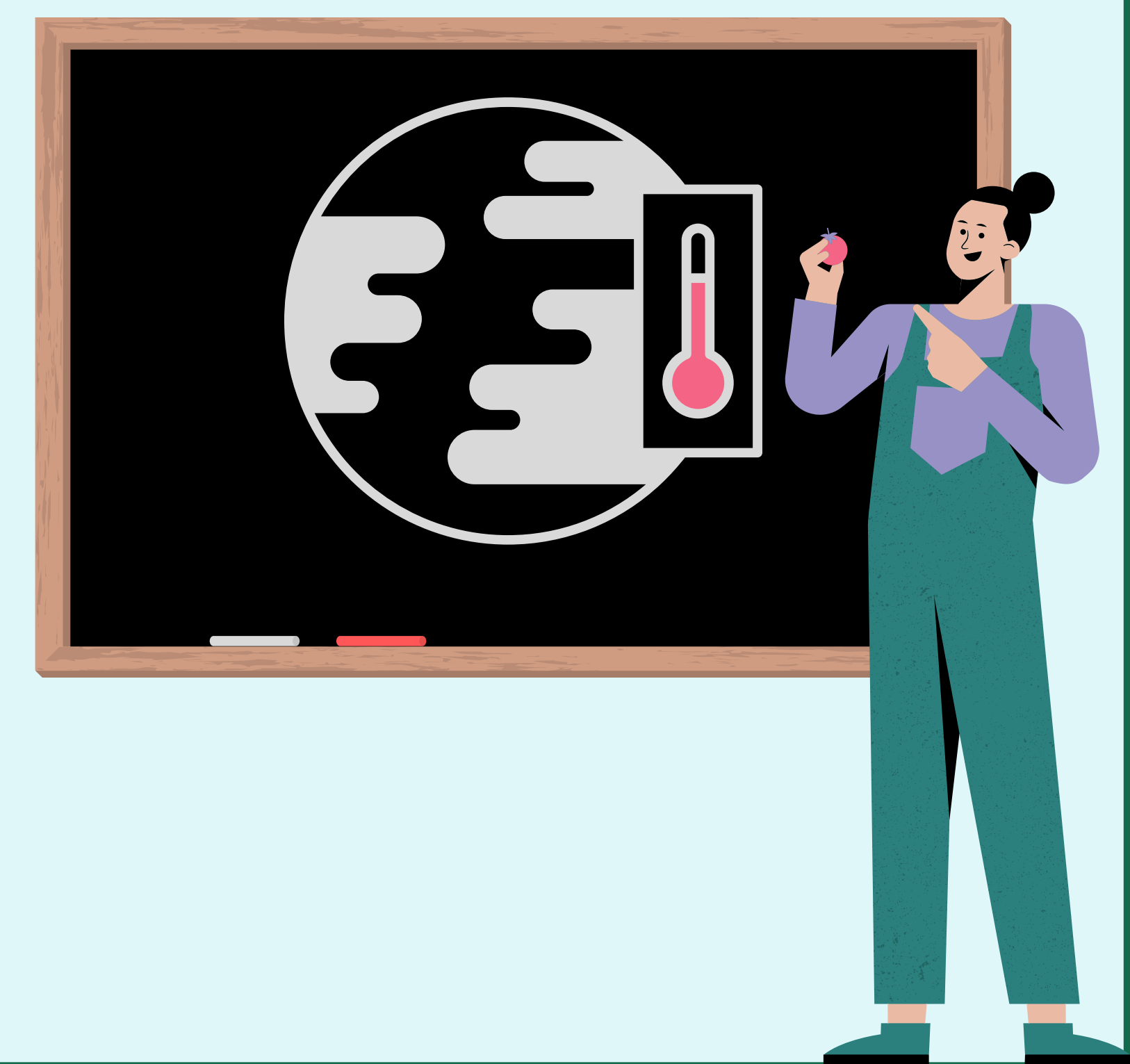
### MAINE K-12 SCHOOLS

All local education providers throughout the state for Pre K-grade 12 are eligible for funds, including school administrative units, schools in an unorganized territory, private schools approved for the receipt of public funds, and CTE Region schools,

## WHAT IS FUNDED

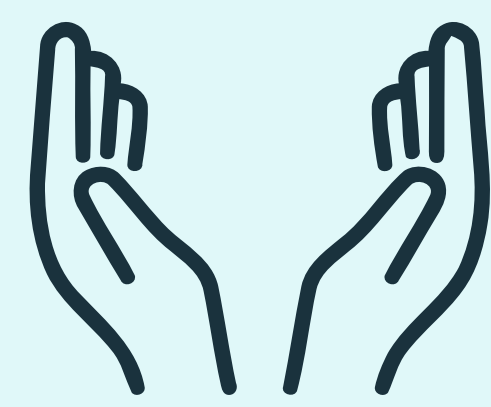
### RANGE OF ACTIVITIES

Funding can be used for **hiring/contracting** program staff, providing **stipends** (standard DOE rules apply) to educators and community organizations, developing **curricula** and related supplies, costs of **physical space** for programming, and **administrative** expenses



## PRIORITIZATION OF APPLICATIONS

### UNDERSERVED COMMUNITIES



Communities that **have not been able to provide both:**

- Climate education (or environmental/outdoor) **partnerships** or **field opportunities** within the last 5 years **AND**
- Climate education (or environmental/outdoor) **electives, extra-curricular opportunities** or **classes**



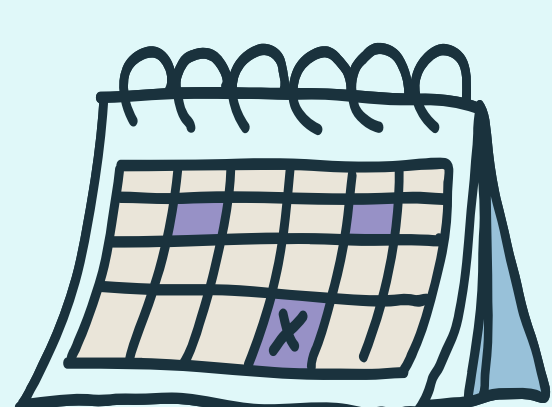
### PLACE-BASED WORK

Or interdisciplinary or project-based work

### SOCIOECONOMICALLY DISADVANTAGED COMMUNITIES



Including tribal communities, migrant students, schools with high populations of students with free or reduced-price meals, or rural schools



PHASE 2 APPLICATION DEADLINE

## MAY 3



### MORE QUESTIONS?

Read the full grant information online:  
[bit.ly/MaineClimateEducationGrant](https://bit.ly/MaineClimateEducationGrant)