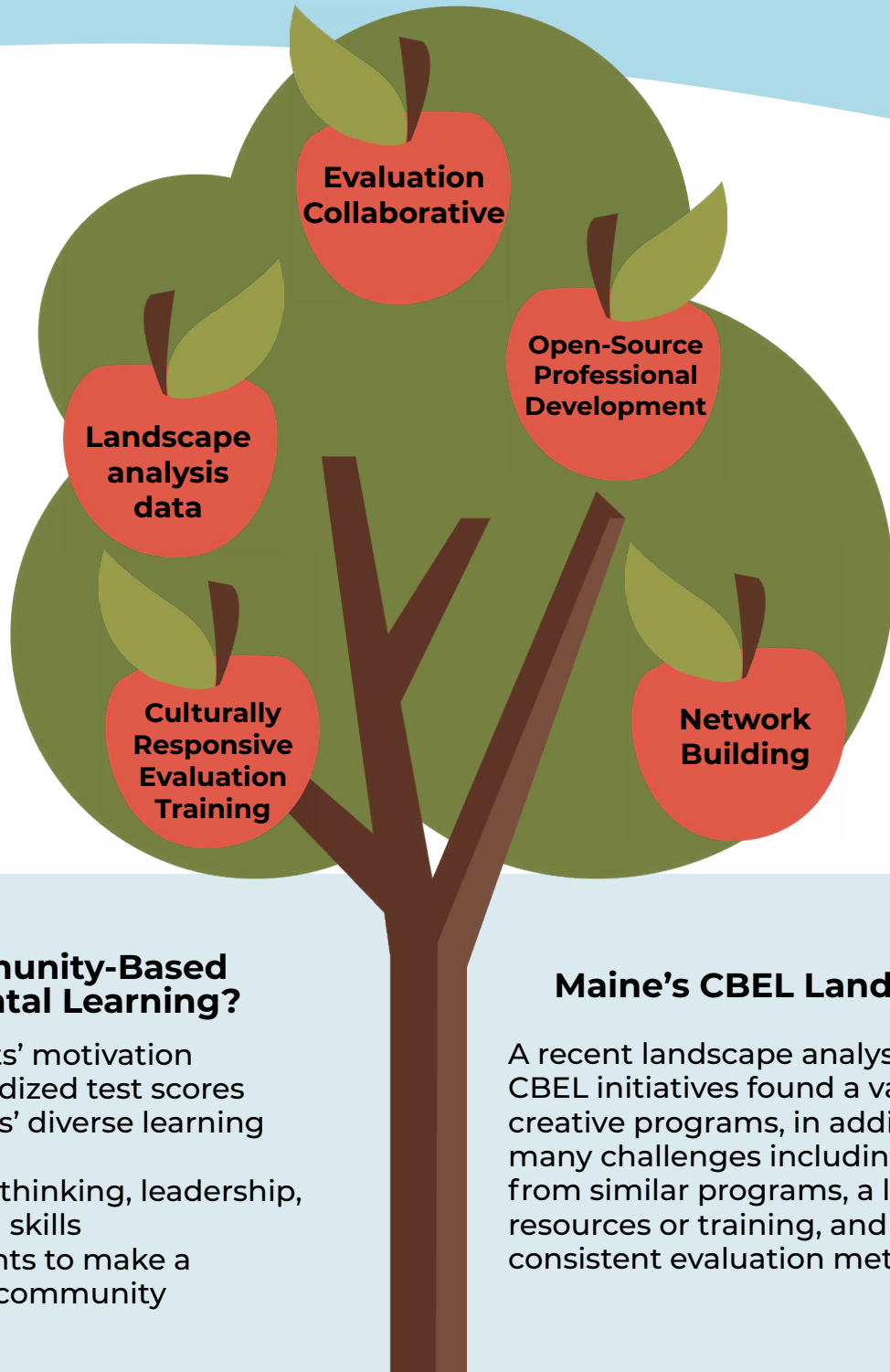


Introducing Teach ME Outside

About the initiative: Teach ME Outside is a Maine environmental learning initiative based on the 2019 Census of Community-Based Environmental Learning (CBEL). We aim to reduce barriers and share community-designed solutions to increase schools' and organizational ability to implement community-based environmental learning. We are working to increase opportunities for professional learning, data sharing, systemic reform, networking, and partnership support.



Why Community-Based Environmental Learning?

- Increases students' motivation
- Improves standardized test scores
- Supports students' diverse learning styles and needs
- Enhances critical thinking, leadership, and collaboration skills
- Empowers students to make a difference in the community

Maine's CBEL Landscape

A recent landscape analysis of Maine CBEL initiatives found a variety of creative programs, in addition to many challenges including isolation from similar programs, a lack of resources or training, and a lack of consistent evaluation methods.

Building Long-Term Systems-Level Support in Maine

Connect with Teach ME Outside

<https://teachmeoutside.org>

The Maine Environmental Education and Outdoor Learning Resource Directory is a dynamic and searchable tool that parents, educators, and community members can use to discover new environmental learning partners and collaborators in their area. Use the tool below to filter and search for providers and organizations by their offering types and/or location!

To use the search tool, just select any number of filters, then click on the magnifying glass search button and select a map pin or directory listing. Or simply explore the map and click on any pin for more details!

Near Me

Category Search for

📍 Near 🔍 ⚙️

Ages Served
Select option ▾

Focus Area
Select option ▾

Services Offered
Select option ▾

Sector
Select option ▾

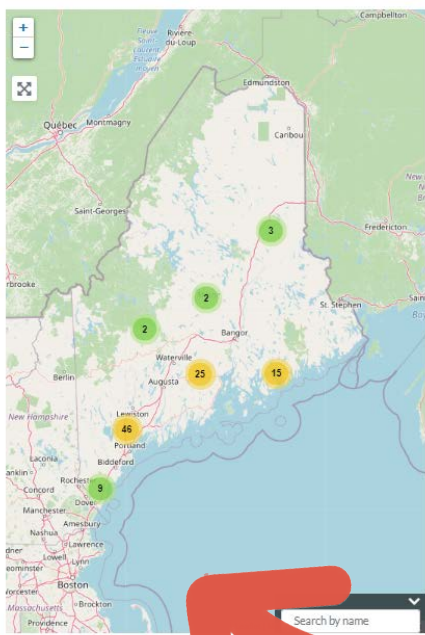
Service Area
Select option ▾

Counties Served
Select option ▾

Program Season(s)
Select option ▾

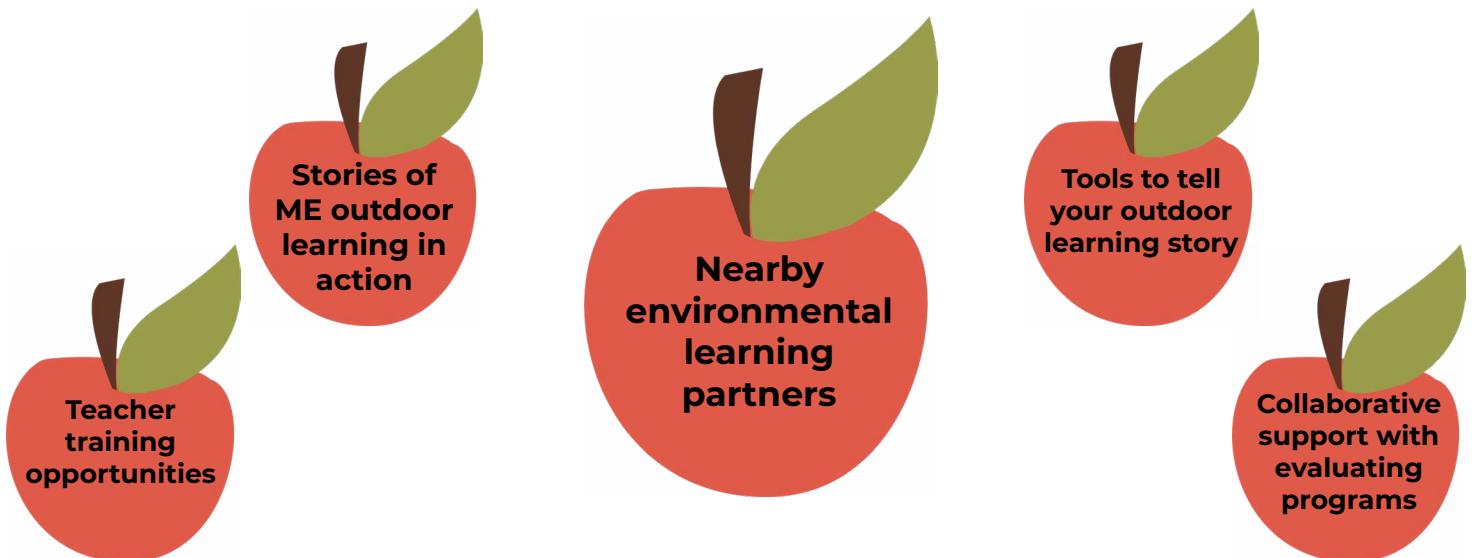
Program Fees
Select option ▾

🔍



On the Teach ME Outside website, find CBEL resources for educators as well as an **interactive searchable map** that parents, educators, and community members can use to find environmental learning partners and collaborators in their area.

Through the Teach ME Outside website you can find:



Teach ME Outside builds on the collaborative work of many different organizations and individuals over the past decade and is led today by a partnership between the Maine Mathematics and Science Alliance, Maine Environmental Education Association, and Nature Based Education Consortium. This project is made possible with support from the Pisces Foundation and the Elmina B. Sewall Foundation.

